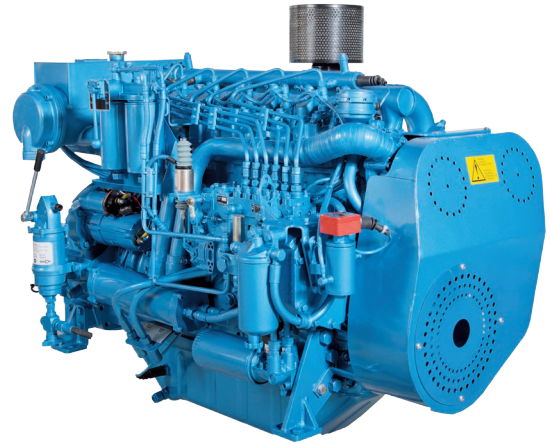


Marine Engines

6 W105M

4 Stroke diesel engine, direct injection

Bore and stroke	105 x 130 mm
Number of cylinders	6 in line
Total displacement	6,75 litres
Compression ratio	18/1
Engine rotation (ISO 1204 standard)	counterclockwise
Idle speed	650 rpm
Flywheel housing	SAE 3
Flywheel	SAE 11,5"



Customer benefits

Built for heavy duty applications with reference performances in its category

Easy service with accessible components and unit cylinder heads

Simple technology with mechanical injection

Life cycle cost efficiency with extended mean time between overhauls (MBTO)

Rated power - Fuel consumption

Duty	kW	hp	rpm	Fuel consumption g/kWh	l/h	IMO
P2	136	185	2100	211	34	II
P3	168	228	2425	216	43	II
P4	185	252	2500	226	50	-

	P2 duty	P3 duty	P4 duty
Application	continuous	intermittent	high performance
Engine load variations	numerous	important	very important
Average engine load factor	30 to 80 %	50 %	30 %
Annual working time	3000 to 5000 h	1000 to 3000 h	less than 1000 h
Time at full load	8 h each 12 h	2 h each 12 h	1 h each 12 h

Power definition

Standard ISO 3046/1 - 1995 (F)

Reference conditions

Ambient temperature	25 °C / 77 °F
Barometric pressure	100 kPa
Relative humidity	30%R
Raw water temperature	25 °C / 77 °F

Fuel oil

Relative density	0,840 ± 0,005
Lower calorific power	42 700 kJ/kg
Consumption tolerances	0 ± 5%
Inlet limit temperature	35 °C / 95 °F

Our ratings also comply with classification societies maximum temperature definition without power derating.

Ambient temperature	45 °C / 113 °F
Raw water temperature	32 °C / 90 °F



Standard equipment

Engine and block

Cast iron cylinder block, with replaceable cylinder liners
 Separate cast iron cylinder heads
 Replaceable valves guides and seats
 Steel forged crankshaft with 7 bearings
 Lube oil cooled light alloy piston with 3 high performance piston rings

Cooling system

Fresh / raw water heat exchanger with integrated thermostatic valves and expansion tank
 Cast iron centrifugal fresh water pump, mechanically driven
 Bronze self-priming raw water pump, mechanically driven

Lubrication system

Full flow screwable oil filters
 Fresh water cooled lube oil cooler

Fuel system

In line injection pump with flanged mechanical governor
 Double wall injection bundle
 Duplex fuel filters replaceable engine running
 Water separator

Intake air and exhaust system

Insulated exhaust gas manifold
 Turbo blower with insulated turbine housing
 Low water temperature cooled intake air cooler

Electrical system

Voltage: 24Vcc
 Electrical starter on flywheel crown
 35A battery charger

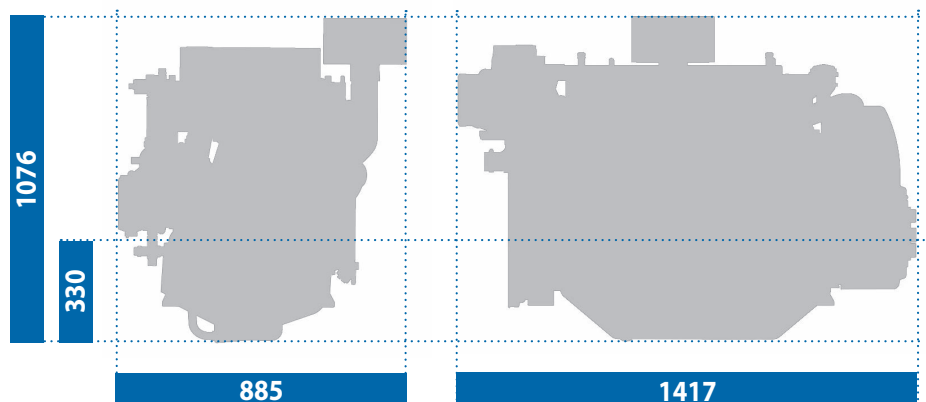
Optional equipment

Cooling system adapted for box / keel cooling
 Connection for emergency raw water circuit
 Bilge pump
 Air starter

Free end PTO
 Resilient mounts under engine
 Exhaust water injection after turbocharger

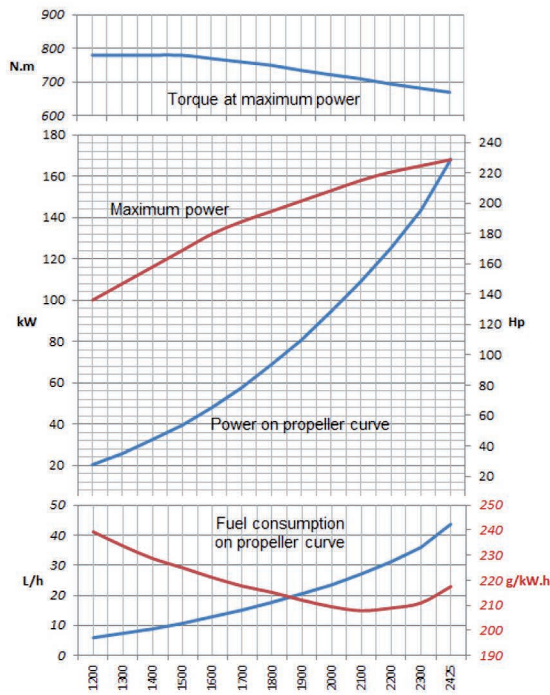
* contact us for further information regarding our options.

Dimensions and dry weight (mm / kg)

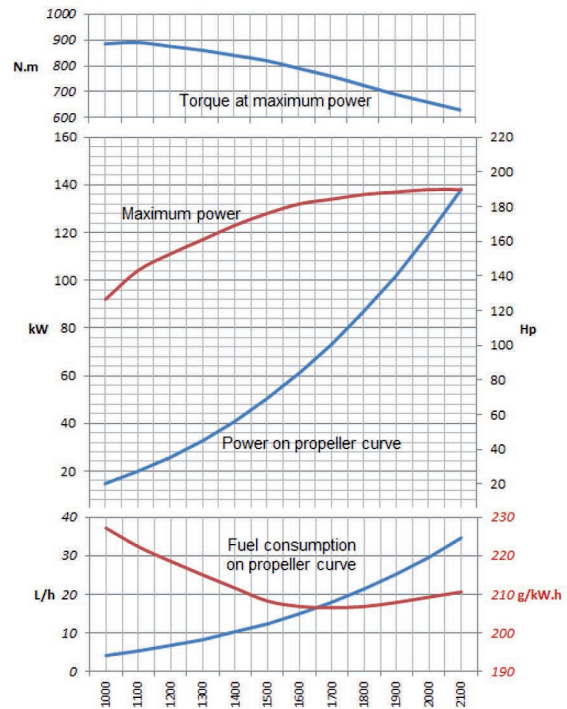


Performance

P2 - 136 kW - 185 hp @2100 rpm



P3 - 168 kW - 228 hp @2425 rpm



P4 - 185 kW - 252 hp @2500 rpm

