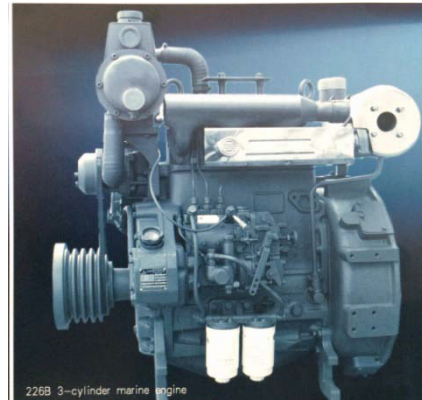


## Maine Engine 226B-3CD Series

### General Specifications

Bore & Stroke	105x120 mm
Displacement	3.12 L
Cylinder Number	3
Compression Ratio	15.5:1
Fuel System	Mechanical Pump
Aspiration	NA/T
Emission Standard	IMO Tier II



Engine Speed	Engine Output		Typical Generator Output
	Prime(PRP)	Standby(ESP)	
RPM	kW	kW	kWe/kVA
1500	30	33	24/30
1500	40	44	30/38

Engine Speed	Engine Output		Typical Generator Output
	Prime(PRP)	Standby(ESP)	
RPM	kW	kW	kWe/kVA
1800	36	40	30/38
1800	50	55	40/50

### Standard Equipment

#### Engine and block

- Cast iron gantry type structure block
- One-piece forged crankshaft
- Separate cast iron cylinder heads and wet liners
- Aluminium alloy pistons with gallery oil cooling

#### Cooling system

- Fresh/raw water heat exchanger with integrated thermostatic valve
- Cast-iron centrifugal fresh water pump, mechanically driven by belt
- Self-priming raw water pump, mechanically driven

#### Lubrication system

- Spin-on full-flow lub oil filter

### Optional Equipment

- Different harness length of remote monitor

### Dimensions

Length	845 mm
Width	738 mm
Height	1025 mm
Net Weight	460kg

#### Fuel system

- In-line fuel injection pump
- Duplex fine filter and large capacity pre-filter for better efficiency

#### Intake air and exhaust system

- Insulated exhaust manifold and exhaust expansion joint

#### Electrical system

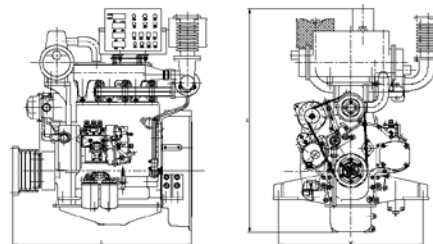
- 24V electric starter motors and battery charging alternator
- Standard sensor connector

#### Flywheel and housing

- SAE3 flywheel housing and 11.5" flywheel

#### Certification

- CCS



Distributed By:

Manufacturer: Weichai Power Co., Ltd  
 Address: 197 A, Fushou East Street, High-Tech  
 Development Zone, Weifang, China  
 www.weichai.com

